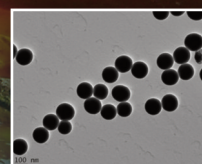
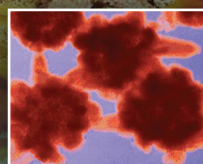
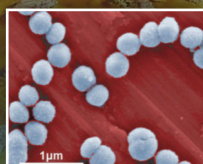
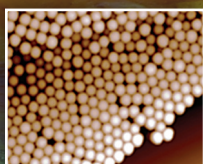


## FRONTIERS MEETING 2012

# Nanogeoscience: a new frontier in science and technology for Earth and environmental systems



10 December 2012

The Geological Society of London, Burlington House, Piccadilly, London

Frontiers Meetings are 1-day meetings focused on short presentations and discussion to explore developments in emerging geoscience areas, followed by an open access discussion forum

### Convenors

Vicky Coker (Manchester), Éva Valsami-Jones (Birmingham), David Vaughan (Manchester)

*Registration for this meeting is free, but you must pre-register your interest in attending*

(Please email Steve Whalley at the address below)

### Call for papers

Over recent decades, there have been dramatic developments in techniques for studying nanometer-sized particulate materials that occur naturally, or that can be synthesised in the laboratory or on an industrial scale. Nanomaterials have properties which are distinct from their larger sized compositional equivalents and which are, in some cases, of practical value in fields ranging from technology to medicine. Nanotechnology presents both opportunities and threats, the latter because of the limited knowledge of how industrial nanomaterials behave when released into the natural environment. Nano-particles also play a key role in the natural geochemical cycling of the elements, not least because they have large surface area for the uptake of toxic materials ranging from radioactive species to organic pollutants and inorganic pollutants such as arsenic. Oral presentations are invited on all aspects of nanogeoscience.

**New Abstract Submission Deadline: 26 October 2012**

Please submit abstracts to Steve Whalley at [steve.whalley@geolsoc.org.uk](mailto:steve.whalley@geolsoc.org.uk)

For further information about the meeting, or to submit an abstract, please contact:  
Steve Whalley, The Geological Society, Burlington House, Piccadilly, London W1J 0BG

T: 020 7434 9944 F: 020 7494 0579

E: [steve.whalley@geolsoc.org.uk](mailto:steve.whalley@geolsoc.org.uk) W: [www.geolsoc.org.uk/frontiers12](http://www.geolsoc.org.uk/frontiers12)